

Precision with Flexibility

The IsoMet product family is capable of cutting with precision via a manual or automatic movement. The IsoMet family provides great versatility in holding all types of sample shapes and configurations.

IsoMet™ 1000

The IsoMet 1000 is a precision sectioning saw is designed for cutting various types of materials with minimal deformation. Targeted for delicate parts by only using gravity fed force.



RPM ranges from 100-975 to provide cut quality for varied materials

Part Number	Voltage
11-2180	85-264VAC, 50/60Hz

Dimensions: 15.5in [394mm]W x 20.25in [514mm]D x 24.5in [622mm]H open
12in [305mm]H closed

Weight: 56lbs [25kg]

IsoMet™ Low Speed

The IsoMet Low Speed is a precision sectioning saw designed for cutting various types of materials with minimal deformation. Targeted for delicate parts by only using gravity fed force.



RPM ranges from 0-300 to provide cut quality for varied materials

Part Number	Voltage	Units
11-1280-160	115VAC, 50/60Hz	Inches
11-1280-170	115VAC, 50/60Hz	Millimeters
11-1280-250	230VAC, 50/60Hz	Millimeters

Dimensions: 10.5in [267mm]W x 12in [305mm]D x 25.5in [571mm]H

Weight: 25lbs [11.3kg]

Tips, Tricks & Techniques



For the best performance from your Precision Cutter System:

- Always tightly clamp your sample
- Use double saddle chucks for long parts such as rods
- Do not hand dress blades
- Mount spheres, unusual shapes and friable materials
- Use the largest flange for your blade and specimen
- Soft, gummy materials can build up on the blade during the cut and may require dressing while sectioning these materials.



Precision Cutter Accessories

IsoMet™ Low Speed Cutter Accessories



Goniometer

Rotates specimen along 3 axis

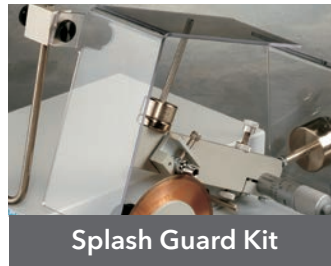
11-2381



Manual Feed Control Dressing Chuck

Enables blade dressing without removing the sample fixture

11-1196



Splash Guard Kit

Prevents lubricant from splashing out of saw

11-1199

IsoMet™ Low Speed Cutter & 1000 Accessories



Swivel Arm Assembly

Swivels to position specimen cutting surface perpendicular to blade (replaces support arm provided with cutter)

11-1181



Bar & Tube Chuck

Securely holds end of a bar tube up to 2in [50mm] long and 0.5in [13mm] in diameter

11-1184



Wafer Chuck

Use mounting wax, 40-8150 or 40-8145 to glue specimens to wafer chuck
1.125 x 2in [29 x 51mm]

11-1186



Vacuum Chuck

Holds specimens mounted to glass slides to chuck with vacuum force

11-1188



Small Bone Chuck

Ideal for clamping bone, plastics, or other semi-rigid solids up to 1.5in [32mm] in diameter

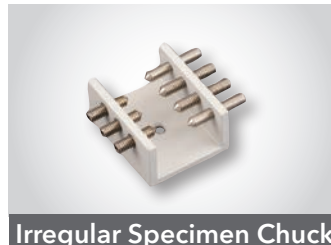
11-1194



Double Saddle Chuck

Small Double Saddle Chuck that securely holds specimen up to 0.875in [22mm] from 2 points

11-1183



Irregular Specimen Chuck

Adjusts to hold irregular shaped specimens up to 1in [25mm] in diameter

11-1185



Single Saddle Chuck

Holds specimens up to 0.75in [19mm] in diameter

11-1187



Mount Chuck

Aluminum chuck holds mounted samples
1-1.25in [25-32mm]

11-1189

IsoMet™ 1000 Accessories



Rotating Chuck Assembly

Rotates specimen chuck to increase the maximum cutting depth of the blade

11-2181



Table Saw Attachment

Transforms gravity fed IsoMet 1000 into convenient table saw

11-2182



800 gram Weight Set

Additional weights for gravity fed saws

11-2183



Goniometer

Rotates specimen along 3 axis

11-2185



Table Saw Splash Guard

Catches splashing lubricant when used in conjunction with the Table Saw Attachment (11-2182)

11-2186



Fastener Chuck

Holds specimen from 0.96in [24.5mm] to 2in [50mm] for longitudinal sectioning

11-2482



Swivel Arm Accessory

Swivels to position specimen cutting surface perpendicular to blade (*replaces provided support arm*)

11-2184



Double Saddle Chuck

Large Double Saddle Chuck that securely holds specimen up to 1.5in [38mm] from 2 points

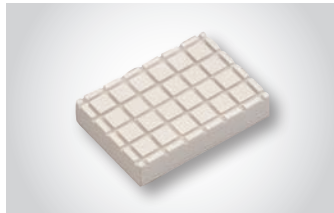
11-2483



Glass Slide Chuck

Holds 27 x 46mm, 1 x 2in, or 1 x 3in glass slides

11-2484



Wafer Chuck

Use mounting wax (40-8150) to glue specimens to wafer chuck 1.75 x 2.5in [44 x 64mm]

11-2486



Single Saddle Chuck

Medium Single Saddle Chuck holds up to 1in [25mm] specimen

11-2487



Glass Slide Chuck

Holds 2 x 3in glass slides

11-2488



Mount Chuck

Holds mounted samples 1.5in [40mm]

11-2489