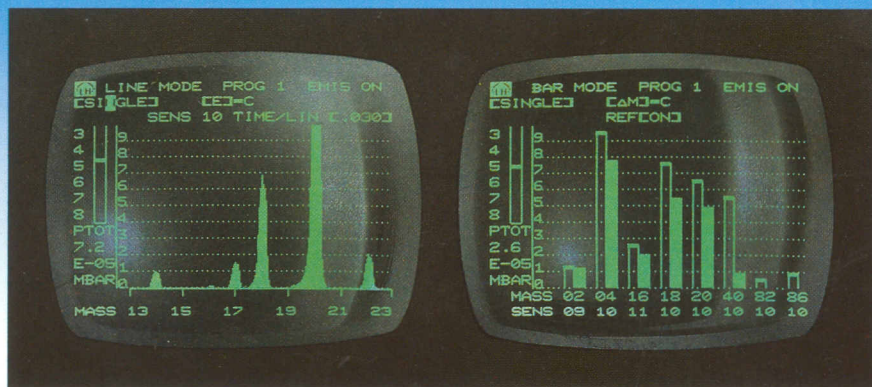
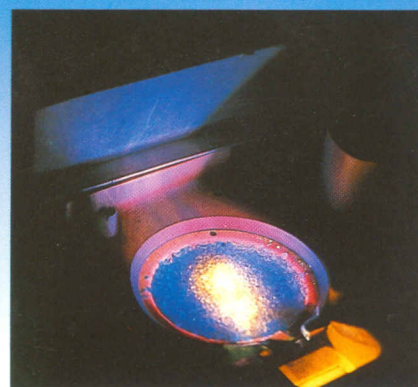


TURBOVAC® 340 M with magnetic bearings



Mass spectrometry



Vacuum coating

Applications

Measurement and analysis equipment

- Mass spectrometers
- Surface analysis systems
- Electron microscopes

UHV process engineering

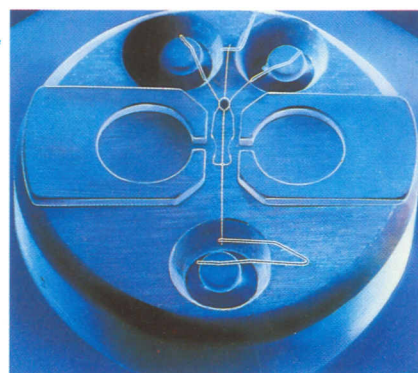
- Molecular-beam epitaxy
- Ion implantation

Industry

- Lamp and tube production
- Sputtering and vapour-deposition systems

Research

- Nuclear physics installations
- UHV systems
- Ion sources



Electron microscopy

Technical data

High vacuum connection	DN	100 ISO-K/CF	160 ISO-K/CF
Pumping speed for N ₂	l x s ⁻¹	270	400
Pumping speed for He	l x s ⁻¹	370	400
Pumping speed for H ₂	l x s ⁻¹	340	370
Compression ratio for H ₂		2.5 x 10 ³	
Rated rotational speed	r.p.m	51,600	
Run-up time	min	3	
Mounting position		any desired	
Cooling			
...normal operation		not required	
...bake out		water	
		(pump pre-configured as standard equipment)	
TURBOVAC 340 M	Cat.-No.	85590/85591	85592/85593
Control electronics and power supply unit			
TURBOTRONIK NT 340 M	Cat.-No.	85571	

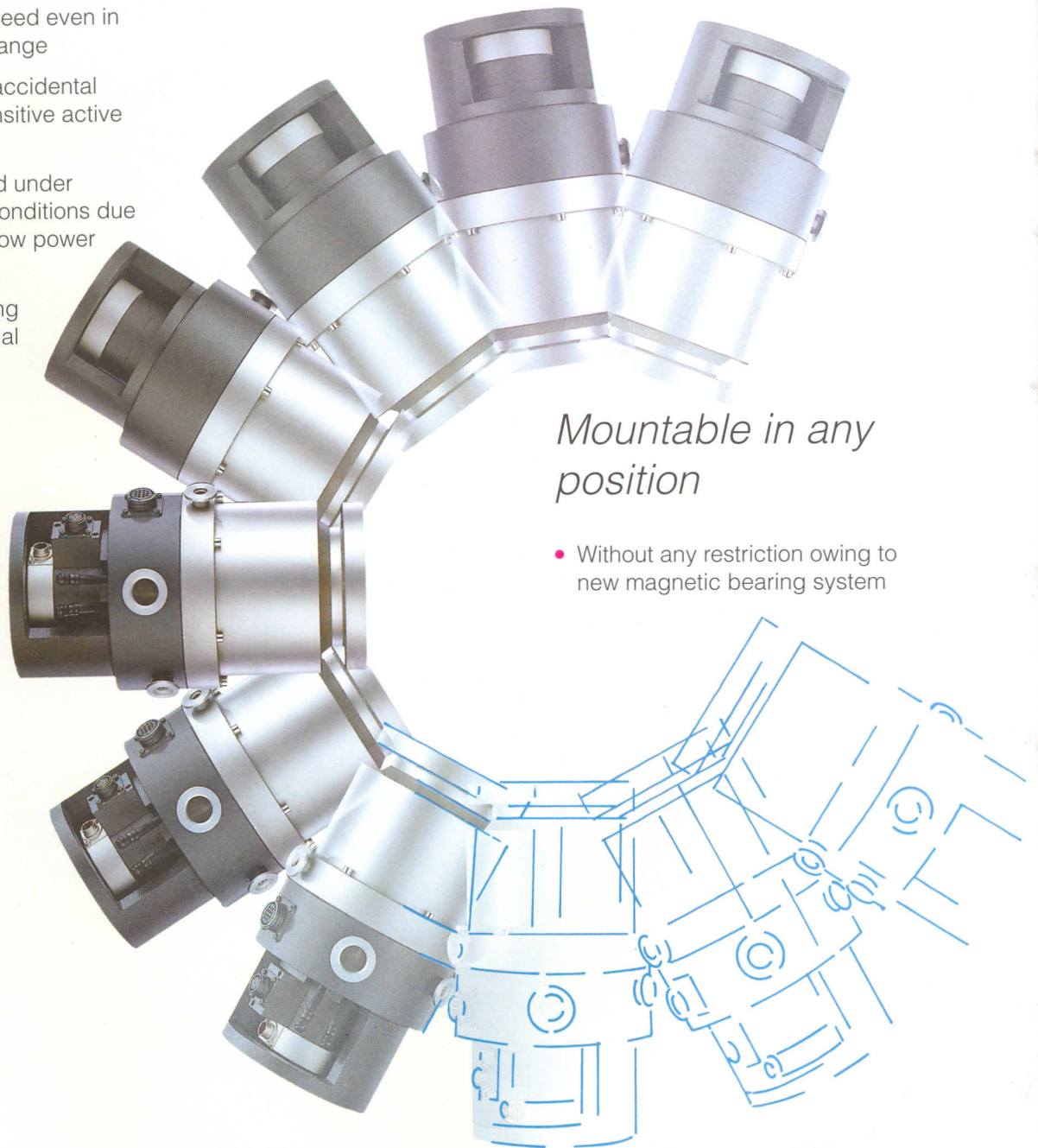
LEYBOLD AG

Vacuum Technology
 Bonner Strasse 498
 D-5000 Cologne 51
 Telefon: 02 21 / 3 47-0
 Telex: 8 88 481-0 lhd
 Fax: 02 21 / 347-12 50

• *Attractive price* • *Any mounting position* •

Reliable and
maintenance-free

- Wearfree
- Protected against power failure by built-in power generator and high quality dry touch-down bearings
- Stable rotational speed even in the high pressure range
- Protected against accidental shocks by high sensitive active bearing control
- No cooling required under normal operation conditions due to highly efficient, low power DC-drive
- Built in water cooling capability for special applications and bake-out operation



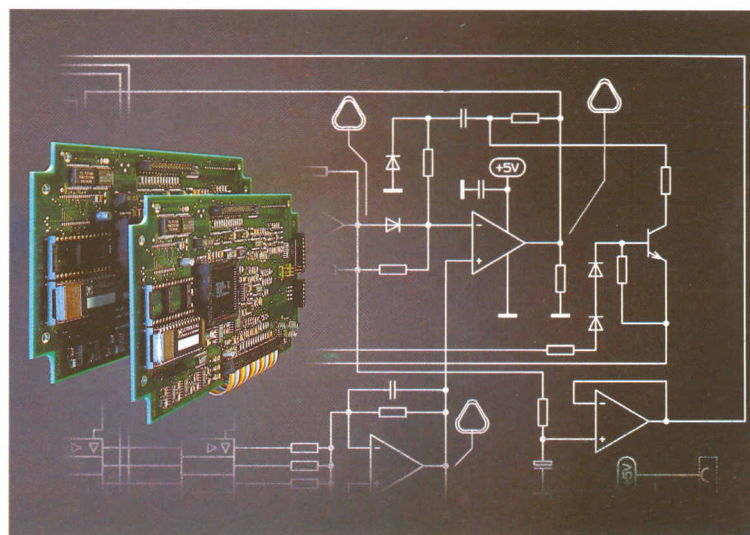
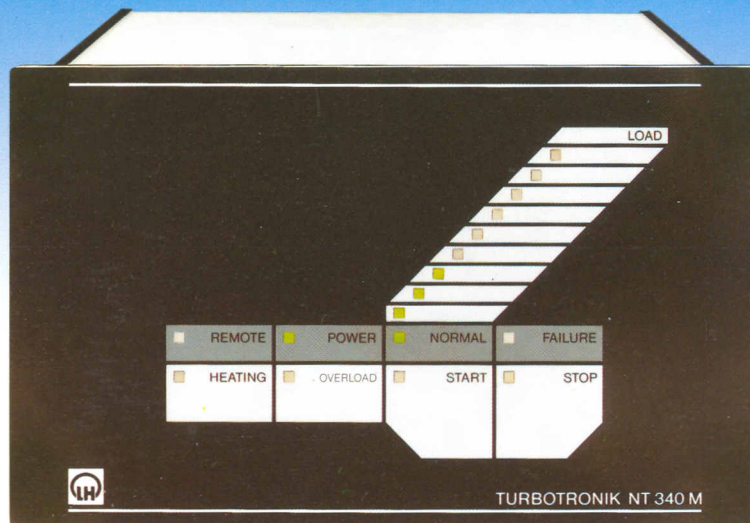
Mountable in any position

- Without any restriction owing to new magnetic bearing system

TURBOVAC® 340 M with magnetic bearings

Compact and intelligent control unit

- Control electronics and power supply in a sturdy half rack standard panel (1/2 19", 3 HU)
- LED display of operating parameters
- Remote operation and process control via analogue and PLC-compatible inputs and outputs
- Simple failure diagnostics
- V.24/RS 232-C interface as standard equipment
- Integrated supply lines and on-off controls for the optional air cooler, heater and one solenoid-activated valve
- Integrated backing-pump drive control
- Touch-panel keyboard



Highly versatile

- For cyclical operation: extremely short run-up and run-down
- For sensitive, high resolution analytical equipment: low vibration operation
- For UHV applications: absolutely hydrocarbon-free
- For applications with toxic or aggressive media: built-in inert gas purge system
- For processes with hydrogen concentrations at any level and at high pressure: encapsulated magnets