

Microvac® Vacuum Pumps

Features:

- Exclusive two-year warranty**—rugged construction, low maintenance.
- Low ultimate blank-off**—vacuums to 5 microns and lower, with high pumping capacity.
- High efficiency**—80% or better even down to 0.1 mm range.
- Quiet operation**—valve design virtually eliminates valve maintenance and noise.
- Space-saving design**—saves up to 50% valuable floor space.
- Complete and self-contained**—delivered ready for work, no extras to buy.

- Automatic lubrication**—system provides proper flow of oil to bearings and sealing surfaces, prevents backflow into system.
- Controlled balancing**—reduces vibration to practical minimum.
- Gas ballast**—standard on all models.
- Total capability**—includes the manufacturing and service capabilities to keep your equipment in top operation—with a broad range of pumps, components, and auxiliaries. This service capability benefits you with efficient purchasing—one vendor, one responsibility, and expert technical knowhow. Deliveries from stock on the East and West coasts of the U.S.

- Sales and service**—Stokes maintains extensive sales and service facilities throughout the world to meet the needs of our customers.

Our total vacuum capability also includes a full line of mechanical booster pumps with 612 to 14,000 cfm (1,040 to 23,800 m³/h) capacities, as well as two-stage mechanical vacuum pumps with dry first stage and 125 to 612 cfm (212 to 1040 m³/h) displacement. Ask for Bulletin 536.

Specifications for Microvac Vacuum Pumps

Displacement	cfm	30	50	80	100	150	300	600	728	
	m ³ /h	50	85	135	170	255	510	1020	1240	
Model No.		146H	148H	149H	149HS	212H	412H	612H	912H	
Pump Speed	rpm	800	610	490	615	500	490	490	438	
Motor*	hp	1-1/2	2	3	5	7-1/2	10	10 (2)	30	
Motor Speed	rpm	1800	1800	1800	1800	1800	1800	1800	1800	
Pipe Connections	Suction	in	2 FLG	1-1/2 FLG	2 FLG	2 FLG	3 FLG	4 FLG	6 FLG	6 FLG
		mm	51	38	51	51	76	102	153	153
	Discharge	in	1-1/4 NPT	1-1/2 NPT	1-1/2 NPT	1-1/2 NPT	2 NPT	3 NPT	3 NPT (2)	5 NPT
		mm	32	38	38	38	52	76	76 (2)	127
	Water Inlet	in	—	—	1/2 NPT	1/2 NPT	1/2 NPT	1/2 NPT	1/2 NPT (2)	1 NPT
		mm	—	—	13	13	13	13	13	25
	Water Outlet	in	—	—	1/2 NPT	1/2 NPT	1/2 NPT	1/2 NPT	1/2 NPT (2)	1 NPT
		mm	—	—	13	13	13	13	13	25
Oil Capacity	gal	1/2	1-1/4	2-1/2	2-1/2	4	12	24	20	
	liters	2	5	10	10	15	46	92	76	
Weight	Net	lb	315	345	565	565	950	1750	3800	5500
		Kg	143	157	256	256	431	794	1724	2495
	Shipping	lb	390	435	675	675	1075	1975	4500	6000
		Kg	177	197	306	306	488	896	2041	2724
Height	in	30	32	38-7/8	38-7/8	43-1/2	51-3/4	56-5/8	66-1/2	
	mm	762	813	987	987	1105	1314	1438	1689	
Floor Space	in	15-1/2x16-3/4	19-1/8x16-9/16	23-1/2x20-1/8	23-1/2x20-1/8	26-1/4x24	40-1/4x25-5/8	44-3/4x70	50-1/2x39-7/8	
	mm	394x425	421x486	597x511	597x511	667x610	1022x651	1137x1778	1283x1013	
Cooling System		air	air	water	water	water	water	water	water	
Consumption,** Max.	liters/min	—	—	3.785	3.785	5.7	7.6	15.2	18.9	

* Motor specification is for 60 Hz. For operation at 50 Hz, pump speed is 5/6 of that shown.

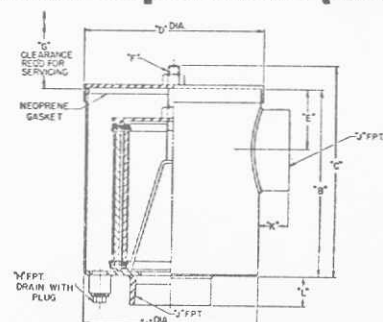
** Use of the Series 412-124 Water Miser can reduce water consumption up to 90%.

Pump performance and efficiencies will vary with system and environmental conditions. Final pump selection should be made in consultation with your Stokes® Vacuum Specialist.



Traps sub-micron oil particles to remove oil smog and solids from pump exhaust. Reduces air contamination. Double cleaning action. Filters particles as small as .03 micron; replaceable element is simple to maintain. All units are closed circuit type. Piping kit for attaching to Stokes pumps included.

Model 291 Oil Mist Separators (Exhaust)



CLOSED CIRCUIT FOR USE WHERE
OBJECTIONABLE GASES ARE HANDLED